



Accessibility Guide

The Brontë Parsonage Museum is in Haworth, West Yorkshire, a village on a hill, with steep cobbled streets and historic buildings. The Museum is at the top of the village Main Street, behind the Parish Church and is a Grade 1 Listed Building.

Our address is:

Brontë Parsonage Museum
Church St,
Haworth
Keighley
West Yorkshire
BD22 8DR

For more information about the Brontë Society and Brontë Parsonage Museum, visit www.bronte.org.uk. The website provides up to date information about opening times, events, contact details for public transport services and links to maps.

Car parking

The nearest car park is the Museum car park, owned and operated by Bradford City Council, (pay and display), off West Lane, Haworth BD22 8DU. For more information about car park management, visit www.bradford.gov.uk.

The entrance to the car park is clearly indicated off West Lane.



There are approximately fifty parking spaces in the Museum car park, including two designated for Blue Badge holders. The designated spaces share a central hatched 1.2m wide access zone but do not have a rear 1.2m wide safety hatched zone. The spaces are located next to the car park entrance, which is nearest the existing step free route from the car park to the village and the Brontë Parsonage Museum.



Routes to the Museum

Stepped Route

The most direct route to Brontë Parsonage Museum from the car park is via three stone steps and a continuous sloping path of approximate gradient 1:10, towards Church St.



There is a handrail with colour contrast against the background to part of one side of the sloping access path, which has a wide (over 1.8m) firm and mostly even surface.



Step free route

The step free route from the Museum car park is via the village, taking approximately four minutes at an average walking pace.

Leave the car park towards West Lane, past the public toilets.

The curved and sloping stone paved footpath is uneven in places and has cross-fall towards the road.



Continuing along West Lane, there are footpaths to part of the lane, with a stone paved surface, a kerb which is high in places and with few dropped kerbs.

Further towards the village, the road narrows by The Old White Lion Hotel, where there is no footpath.

The road surface is stone cobbles, or setts, which are small pavings, with a curved surface and uneven joints.



At the Kings Arms public house, turn onto Church St, which has a stone sett surface and paved footpaths are narrow and not continuous.



The street continues past the church towards the Museum.



The street widens after the church and a footpath is provided to one side, which has a firm and fairly level surface.

The gradient is approximately 1:12 for the length of approximately seventy-five metres.



From Main St

At the head of Main St, is the junction with Changegate and West Lane, Church Street leaves the junction by the Kings Arms public house.



Drop-off for Blue Badge Holders

For visitors unable to negotiate the route to the Brontë Parsonage Museum, please contact the Museum staff to pre-arrange drop-off near the entrance on tel 01535 640192 or by email via bronte@bronte.org.uk



Visitor Facilities

The Museum's visitor toilets are located in the building next to the Museum Shop.

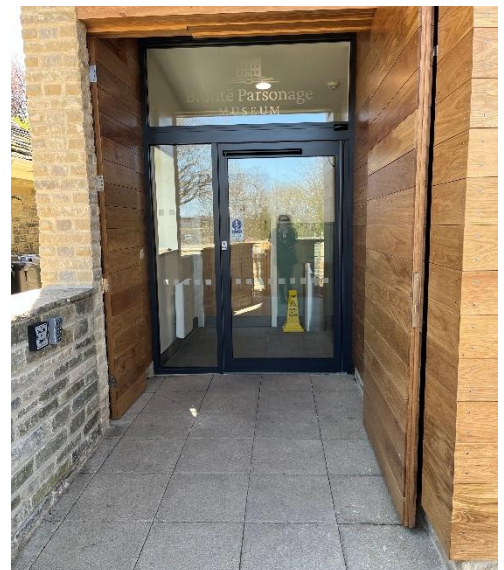
The entrance is level paving slabs.



The building includes four individual self-contained cubicles, one accessible toilet for people in wheelchairs and a Changing Places toilet (CPT).



On entering the building the glass door is automatic and opens on a sensor. There is also a button on the left-hand wall that opens the door.



As you enter the building, the Accessible Toilet is straight ahead of you.

The building is routinely checked by staff every hour, but please speak to a member of the Museum team if something doesn't look right or for assistance.



Both the Accessible Toilet and the Changing Places Toilet have red emergency chords. When pulled these will make a sound in the building and the light will flash above the door.

There are also lights in the Museum shop that will flash to alert staff that the emergency chord has been pulled.



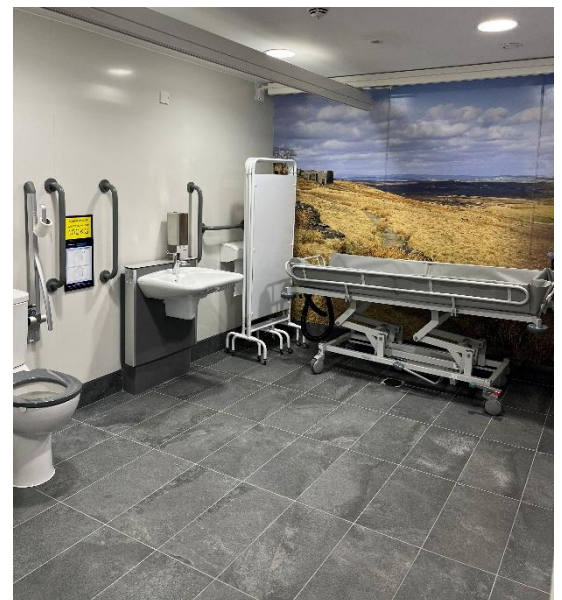
Inside the Accessible Toilet.



The Changing Places toilet is accessible using a radar key. Please speak to a member of staff if you need to use this facility and are not in possession of a radar key.



The Changing Places Toilet includes a hoist, moveable changing bed and wash down facility.



The hoist should be left charging when not in use. Please return the hoist to its charging point after use.





Toilet with pull down handles. Red emergency cord to left of the toilet.



Sink with adjustable height. Press the lever on the right of the sink to move up or down.



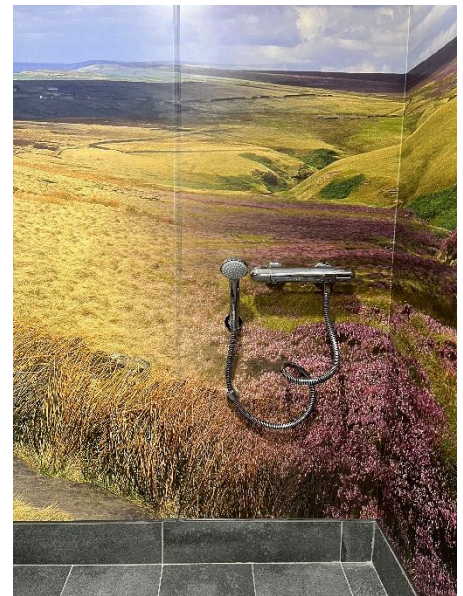
Disposable towel available, pull to release.



Shower bed / changing bed, on wheels (with brakes), and drainage hose.



Privacy screen.



Shower hose.

Purchasing tickets

At the top of Church St, signage indicates the directions of both the ticket office and shop and the Museum entrance.

Tickets must be purchased before entering the Museum if not already purchased online.

The cobbled approach surface (setts) to the upper part of Church St, have a flatter surface with less depth of joint than the lower section changing to a stone paved surface on the approach to the ticket office entrance.

There are two diminishing steps (100 – 200mm rise) leading to the admissions entrance, which can be avoided by approaching via the step-free adjacent shop entrance doors.

The main entrance doors to the ticket office have 50mm diameter pull handles. The resistance of the door to open is high, because of the exposed position of the building and the main opening door of the double doors, has a clear width of 640mm.

Both doors can be opened with assistance from museum staff (in the ticket office) to provide a clear width of 1200mm.

A short corridor (1200mm wide) leads to the ticket desk, which is 900mm high, with a small counter area 710mm height to the underside of the surface.

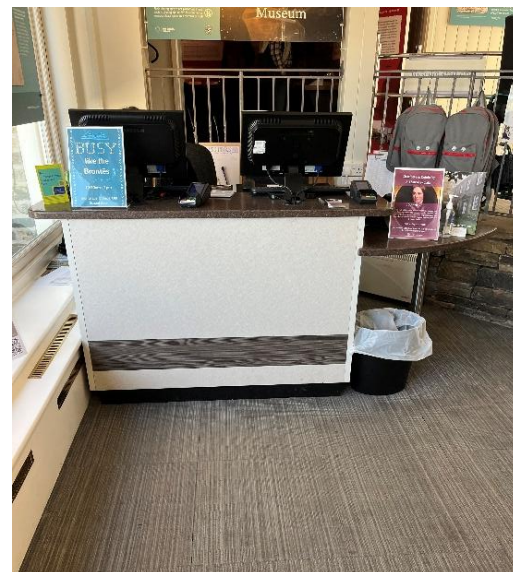


An induction loop is not provided, staff communicate directly across the narrow desk, provide printed literature and have a pen and paper on hand to communicate specific information.

The chip and pin payment machine is wireless and mobile, to be handed to the allow privacy of payment for wheelchair users and people of small stature.

A seat is provided on request.

Assistance dogs are welcome in the Museum.



Entering the Museum

All visitors leave the ticket office and are directed to the Museum entrance by staff and signage.

The entrance is off Church Street in the direction of the church.



Access to the Parsonage entrance is via two steps. There are no handrails, however staff provide a temporary ramp for wheelchair users and those who cannot manage steps.

The ramp width when fully opened is 730mm wide and 1750mm in length and can bear weight up to 500kg.



The steps lead to the gently sloping path of width 800mm, the surface comprises stone flags with edging and grassed areas to each side and continues around the garden.



The main entrance door is via seven steps with a small intermediate landing of 980mm long. The lower steps vary between 140 – 180mm rise have a square profile and the upper steps varying in height between 125mm and 150mm, with a projecting nosing. The tread length varies between 280 and 340mm.



There are no handrails, however staff are happy to assist.

The route for wheelchair users and people who cannot manage stairs is via an alternative route, accompanied by staff, to the rear of the Parsonage.

A path of width 1000mm curves, sloping at a gradient of approximately 1:10 to the left of the Parsonage (looking from the front).



The path heads through a lean-to storage area, which has a localised narrowing through doorways to 660mm

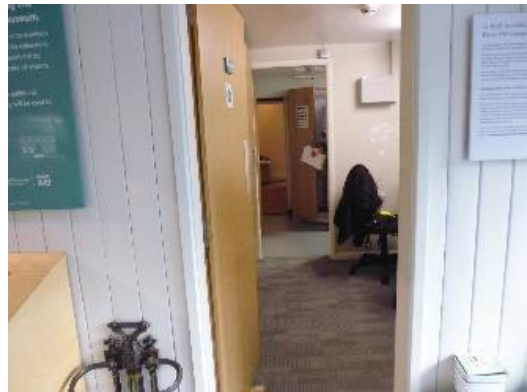


A narrow wheelchair is provided for visitors whose own wheelchair is wider than the restricted width.

The rear door has a single step up into the museum ground level and staff provide the temporary ramp to overcome the change in level. This ramp can bear weight up to 400kg.



Visitors are accompanied by staff through a staff office to an original parsonage doorway which has a narrowing of 550mm.



A wheelchair which passes through this doorway is provided by staff if required and is 500mm wide (2 wheelchairs are available).



All visitors arrive in the ground floor reception hall of the Parsonage.

Circulation at ground floor level is good with doors to rooms held open, having a clear width of 780mm.

Visitors are permitted to take photographs, without the use of a flash.

Chairs are provided for visitors who are not able to walk far or stand for long periods.



There are stairs to the first floor of the Museum.

Seven steps of 170mm rise, tread length 270mm, lead to a quarter landing with a further two risers to a second quarter landing. A further flight of seven risers which narrow to a width of 740mm at the top, are slightly steeper, with the top step having a height of 220mm.

A large, wide handrail is provided to one side of the stairs on the balustrade.



Staff will guide visitors to alternative, wider, easier going stairs, with handrails to both sides if required.

Pushchair space is provided in the shop area at ground floor level.

A lift is not provided to the first floor and visitors who cannot manage stairs are invited to view the Bonnell Room. Staff accompany visitors through the staff office and additional free printed literature is provided which provides more information about the Brontë family, their home and museum collection.



At first floor level, doors to bedrooms have a clear width of 800mm, accessed off the first-floor landing.

The route through Branwell's studio leads to the Exhibition Room, via a width of 690mm and a single step up to the Exhibition Room.



The Exhibition Room has wide circulation routes, with good colour contrast between the floor and displays and seating for visitors' use.

Large signs with photos and illustrations are provided, with good colour contrast between the letters and background and in both upper and lower case easily read font.

Stairs lead down to the ticket office with signs indicating the way out.

Contrasting, easily grippable handrails are provided to both sides of the stairs.

The shallow incline stairs are wide (1100mm), have anti-slip strips on the treads and are the one-way exit route.

These stairs are also available for access to the first floor, as an alternative easier route (than the main Parsonage stair) to the first floor.

On arriving a ground floor level, the Bonnell Room provides a further display and visitors follow the exit route through the shop.

The route to the shop is via four steps down, past the ticket office area and suitable for people who can manage a few steps.

Visitors who are wheelchair users, or cannot manage steps are accompanied by staff, leaving the building via the entry route using the portable ramp. Entry to the shop is via the ticket office entrance.

The shop has a low centre display island with the routes around being minimum 800mm width. There is perimeter display of goods a high and low level. Staff are on hand to assist.

There is a single step by the payment counter, however the counter faces both lower and upper levels. The payment desk does not have an induction loop.

Visitors who are wheelchair users and those who cannot manage steps leave the shop via the ticket office entrance.

A handrail is provided to one side of the step leading to the shop exit.



Parson's Field

Parson's Field is an outdoor grassland enclosure and visitors are invited to enjoy the fresh air and panoramic views.

All dogs are welcome, but visitors are asked to keep them on a lead and take away any deposits.

Visitors are advised that the dry-stone walls and other structures are unstable in parts and should be approached with caution.

The route to the field is through a wide gate and the grassed route leads to a further gate which opens into the meadow.

